

6578000N

- Alkali-feldspar leucogranite and pegmatite
- K-feldspar–phyric granodiorite
- Feldspathic meta-arenite
- Interbedded semipelitic and pelitic gneiss
- Calcsilicate gneiss and marble
- Interbedded psammitic and calcsilicate gneiss
- Psammitic gneiss
- Tonalitic to granitic orthogneiss
- Monzogranite, strongly foliated to gneissic

Snyder Lake till geochemistry (aqua regia partial digestion) As (ppm) in <63 μ m fraction

- | | |
|---|---|
| 0.05 | 0.61–0.8 |
| 0.05–0.3 | 0.81–1.1 |
| 0.31–0.4 | 1.11–7.3 |
| 0.41–0.5 | |
| 0.51–0.6 | |

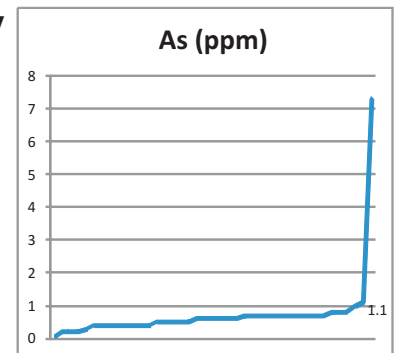


Figure 19: Snyder Lake till geochemistry: partial digestion of <63 μ m fraction, As.